



GENERAL SCIENCE

CH-12, Reproduction in plants

Name: _____

Class: VII Sec: ____

I. OBJECTIVE-TYPE QUESTIONS:

1. Pollination refers to the:
 - a) Transfer of pollen from anther to ovary
 - b) Transfer of female gametes from anther to style
 - c) Transfer of pollen from anther to stigma
 - d) Transfer of pollen from stigma to anther

2. Which of the following is not a part of pistil?
 - a) Stigma b) Filament c) Ovary d) Style

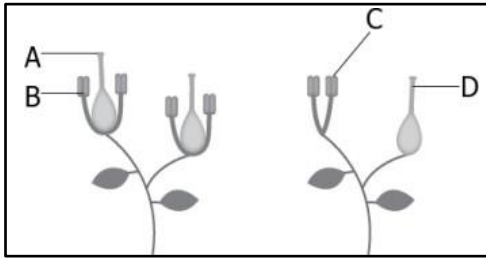
3. The addition of yeast to bread dough makes it raised by increasing its volume, and the growth of fungus takes place on bread slices when it is left for a longer time in moisture. A researcher took samples from the dough of bread on slide A, and from old bread on slide B. The researcher observed the growth of these organisms under the microscope. What type of asexual reproduction might have been observed by the researcher on both slides?
 - a) Slide A- Budding, Slide B-Fragmentation
 - b) Slide A- Spore formation, Slide B-Budding
 - c) Slide A- Budding, Slide B-Spore Formation
 - d) Slide A- Fragmentation, Slide B-Spore Formation

4. Which of the following part of a plant does not take part in sexual reproduction?
 - a) Flower b) seed c) fruit d) branch



INDIAN SCHOOL NIZWA - WORKSHEET

5. The image represents the female and male reproductive parts of two different flowers.



A teacher asked a student to identify the label that represents a pollen grain containing part of a bisexual flower. Which label should be chosen by the student?

- a) Label A b) Label B
c) Label C d) Label D
6. The ovaries of different flowers may contain
a) Only one ovule b) one or more ovule
c) only two ovules d) many ovules
7. Which of the following statements is/are true for sexual reproduction in plants?
a) Plants are obtained from the seeds
b) two parents are always essential
c) Fertilisation occurs after pollination
d) Only insects are agents of pollination.

II. Fill in the blanks.

8. Mature ovary forms the _____.
9. Pollen grain falls on _____ of pistil.
10. The male reproductive part of flower is _____.
11. _____ develops into a new plant.
12. Ovule forms _____.

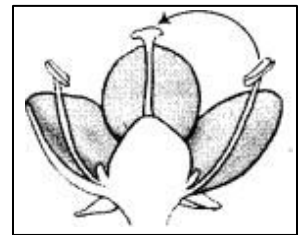


INDIAN SCHOOL NIZWA - WORKSHEET

III Answer the following in short.

- 13 Name two types of flowers on the basis of reproductive parts present in them.
Give an example each.

14. Which type of pollination does the given figure indicate?



15. Write the functions of fruit?

IV. Name the type of asexual reproduction in the following organisms.

- a. Yeast - _____
b. Bread mould - _____
c. Rose - _____
d. Banana - _____
e. Bacteria. - _____
f) Spirogyra - _____